

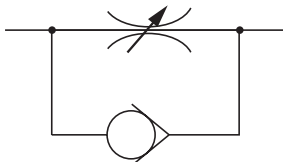
# SPEED CONTROLLERS

## SCL SERIES

**Male thread, R1/8**  
**Female thread, Rc1/8**

- Compact and lightweight--perfect for slim cylinders, etc.
- Can be connected directly to cylinder piping port to reduce piping work and piping materials.
- Can install L shaped piping for more compact installations.

### Symbol



SCL1

### Specifications

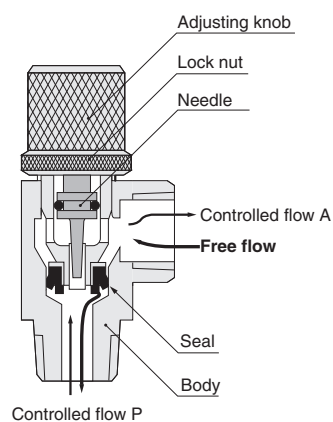
Item	Model	SCL1
Mounting type		Male thread specifications attach directly to cylinder
Port size		R1/8 Controlled flow P male thread A female thread Rc1/8
Media		Air
Operating pressure range MPa [psi]		0~0.9 [0~131]
Proof pressure MPa [psi]		1.32 [191]
Cracking pressure MPa [psi]		0.06 [9]
Operating temperature range °C [°F]		5~60 [41~140]
Mass g [oz]		46 [1.623]
Material	Body	Brass (nickel plated)
	Needle	Stainless steel
	Seal	Synthetic rubber (NBR)

### Order Codes

— SCL1

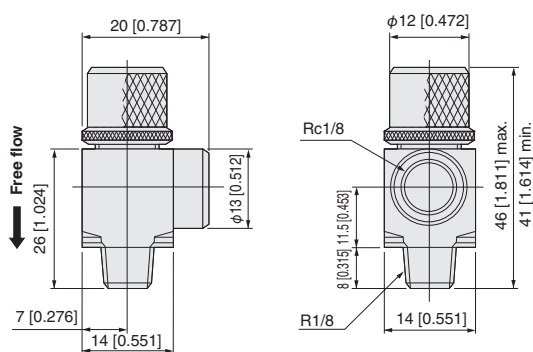
Non-ion specifications  
Blank — Standard specifications  
NCU — Non-ion specifications

### Inner Construction and Major Parts



### Dimensions mm [in]

#### ●SCL1



### Flow Rate Characteristics

#### ●SCL1

