

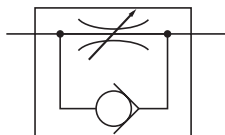
SPEED CONTROLLERS

KSC SERIES

Rc1/4

- Flow rate adjustment is easy.
- Maintain stable flow rate.
- Compact for easy installation.

Symbol



KSC22

Specifications

Item	Model	KSC22
Port size	Rc	1/4
Effective area mm ² [Cv]	Free flow	10 [184.500]
	Controlled flow	6.5 [119.925]
Operating pressure range	MPa [psi]	0.9 [131]
Proof pressure	MPa [psi]	1.3 [189]
Cracking pressure	MPa [psi]	0.02 [3]
Operating temperature range	°C [°F]	5~60 [41~140]
Mass	g [oz]	130 [4.6]
Body material		Zinc die casting

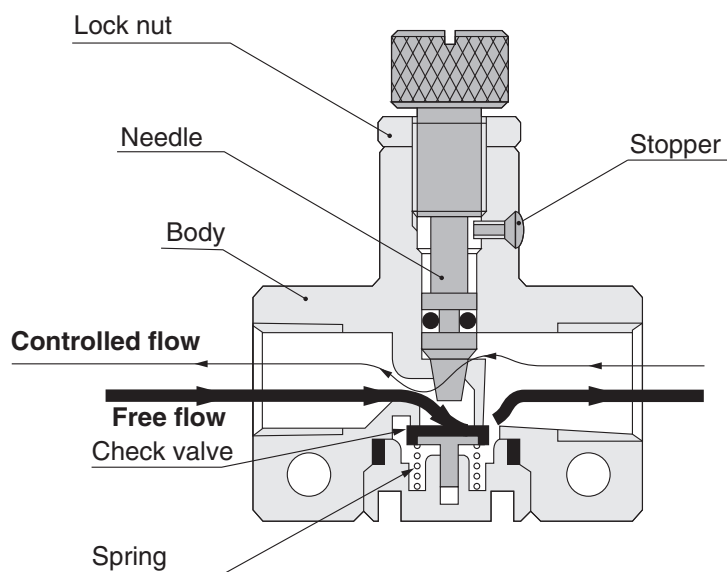
Order Codes

— KSC22

Non-ion specifications
Blank — Standard specifications
NCU — Non-ion specifications

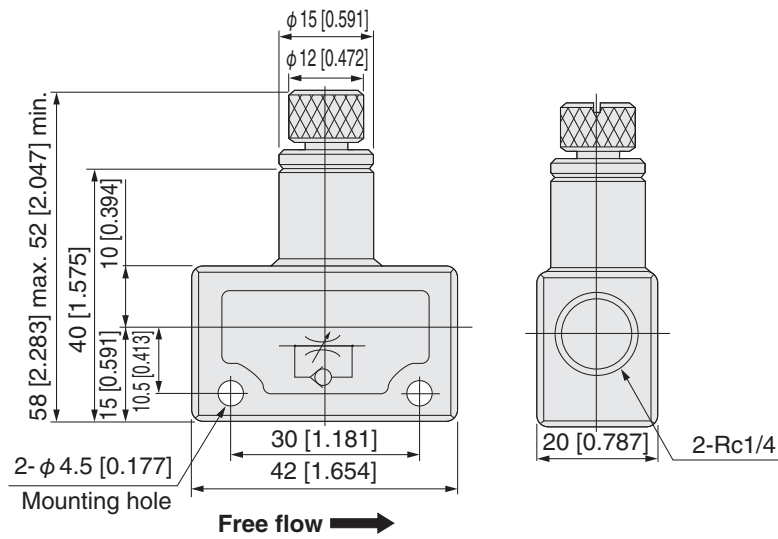
Inner Construction and Major Parts

●KSC22



Dimensions mm [in]

●KSC22



Flow Rate Characteristics

●KSC22

