

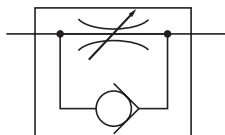
# SPEED CONTROLLERS

## KSC SERIES

Rc1/8

- Flow rate adjustment is easy.
- Maintain stable flow rate.
- Compact for easy installation.

### Symbol



KSC11

### Specifications

Item	Model	KSC11
Port size	Rc	1/8
Effective area mm <sup>2</sup> [Cv]	Free flow	5.5 [101.475]
	Controlled flow	3.0 [55.350]
Operating pressure range	MPa [psi]	0.9 [131]
Proof pressure	MPa [psi]	1.3 [189]
Cracking pressure	MPa [psi]	0.06 [9]
Operating temperature range	°C [°F]	5~60 [41~140]
Mass	g [oz]	90 [3.175]
Body material		Zinc die casting

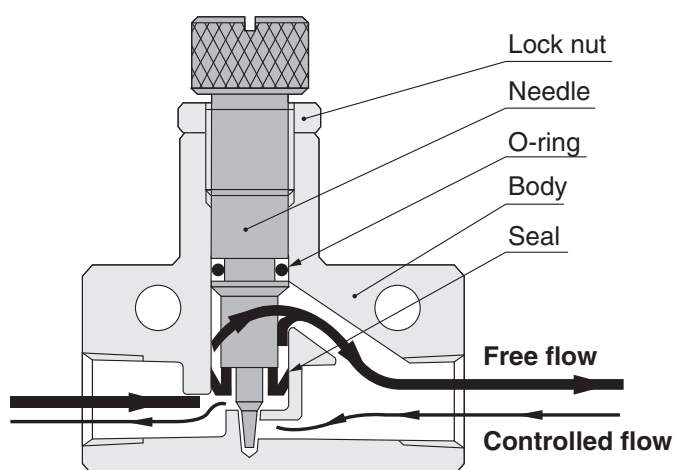
### Order Codes

— KSC11

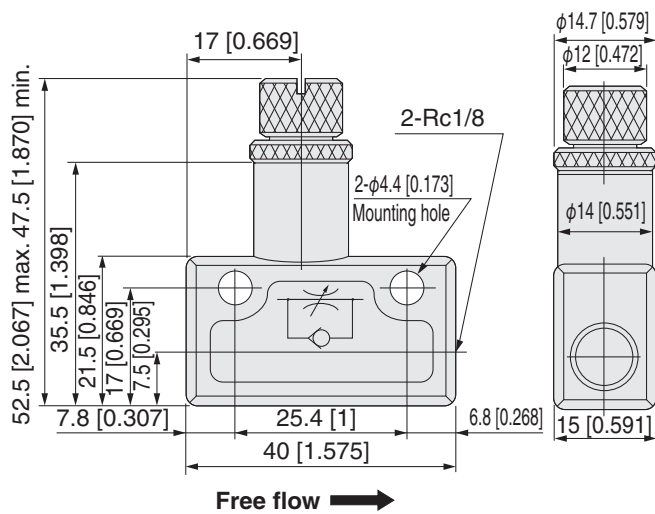
Non-ion specifications  
 Blank — Standard specifications  
 NCU — Non-ion specifications

### Inner Construction and Major Parts

#### ●KSC11



## ●KSC11



## Flow Rate Characteristics

### ●KSC11

