

TAC FITTINGS

- Compact fitting series for all kinds of compact equipment.
- Wide selection of compact fittings.
- Dedicated nylon tubes are available.

Types and Specifications




Common specifications

Media	Air
Operating pressure range MPa [psi]	0 ~ 0.9 [0 ~ 131] ^{Note}
Proof pressure MPa [psi]	1.35 [196] ^{Note}

Note: However, check the specification values for the tubes you are using.

- The recommended tightening torque for thread sizes M3×0.5 and M5×0.8 is 0.6 N·m [5.311 in·lbf] and 1.6 N·m [14.162 in·lbf], respectively.

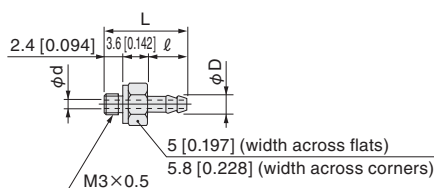
Fittings for nylon tubes

Name and type		Straight (barb fitting)									
											
Model		BF3.2-M3	BF4-M3	BF3.2	BF4	BF5	BF6	PBF3.2	PBF5	PBF6	
Port size		M3×0.5 (male thread)			M5×0.8 (male thread)			R1/8 (male thread)			
Applicable tube O.D × I.D mm [in]		3.2×2.4 [0.126×0.094]	4×2.5 [0.157×0.098]	3.2×2.4 [0.126×0.094]	4×2.5 [0.157×0.098]	5×3 [0.197×0.118]	6×4 [0.236×0.157]	3.2×2.4 [0.126×0.094]	5×3 [0.197×0.118]	6×4 [0.236×0.157]	
Effective area mm ² [Cv]		1.0 [18.450]			1.7 [31.365]		2.0 [36.900]	3.6 [66.420]	1.8 [33.210]	2.2 [40.590]	3.9 [71.955]
Operating temperature range °C [°F]		0 ~ 60 [32 ~ 140]									
Material		Stainless steel			Brass (nickel plated)						
Mass g [oz]		0.7 [0.025]			1.3 [0.046]	1.6 [0.056]	1.4 [0.049]	1.5 [0.053]	5.3 [0.187]	5.4 [0.190]	5.5 [0.194]
Remark	Attachments/accessories	With 1 gasket						—			
	Sales unit	1 pack (10 pcs.)						1 pack (5 pcs.)			

Dimensions mm [in]

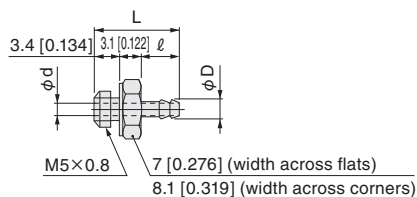
Straight (barb fitting)

●BF□-M3



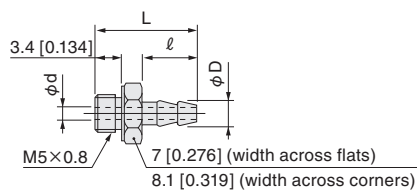
Model	D	L	ℓ	d
BF3.2-M3	2.6 [0.102]	11 [0.433]	5 [0.197]	1.2 [0.047]
BF4-M3	2.9 [0.114]	11 [0.433]	5 [0.197]	1.2 [0.047]

●BF4



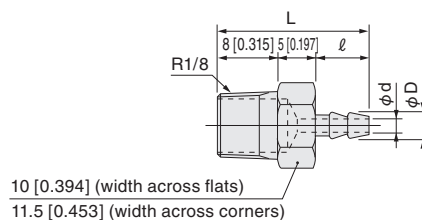
Model	D	L	ℓ	d
BF4	2.9 [0.114]	11.5 [0.453]	5 [0.197]	1.6 [0.063]

●BF□



Model	D	d	L	ℓ
BF3.2	2.6 [0.102]	1.6 [0.063]	11.5 [0.453]	5 [0.197]
BF5	3.5 [0.138]	1.8 [0.071]	13.5 [0.531]	7 [0.276]
BF6	4.7 [0.185]	2.4 [0.094]	13.5 [0.531]	7 [0.276]

●PBF□



Model	D	d	L	ℓ
PBF3.2	2.6 [0.102]	1.6 [0.063]	18 [0.709]	5 [0.197]
PBF5	3.5 [0.138]	1.8 [0.071]	20 [0.787]	7 [0.276]
PBF6	4.7 [0.185]	2.4 [0.094]	20 [0.787]	7 [0.276]