

KOGANEI

Air Valve

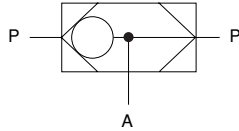
SHUTTLE VALVES

INSTRUCTION MANUAL Ver.1.0

SHUTTLE VALVES

S125, S250

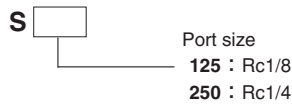
Symbol



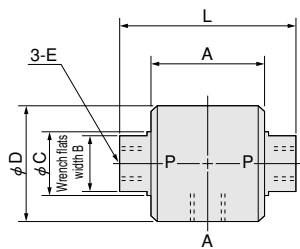
Specifications

Item	Model	S125	S250
Port size	Rc	1/8	1/4
Effective area [Cv]	mm ²	6.0 [0.30]	14 [0.72]
Media		Air	
Operating pressure range	MPa {kgf/cm ² } [psi.]	0.07~0.9 {0.7~9.2} [10~131]	
Proof pressure	MPa {kgf/cm ² } [psi.]	1.35 {13.8} [196]	
Operating temperature range (atmosphere and media)	°C [°F]	0~60 [32~140]	
Lubrication		Not required	
Mass	g [oz.]	50 [1.76]	160 [5.64]

Order Code



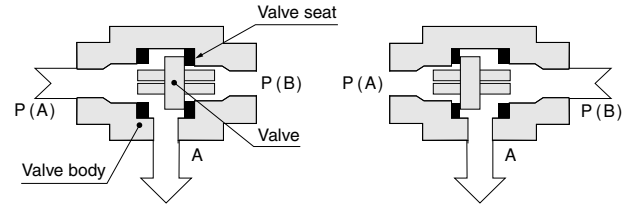
Dimensions (mm)



		mm					
Model	E	L	A	B	C	D	
S125	Rc1/8	43	29	14	15	30	
S250	Rc1/4	62	40	24	26	45	

Operating Principles, Major Parts and Materials

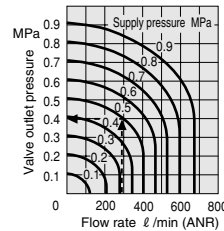
● Operating condition < A > ● Operating condition < B >



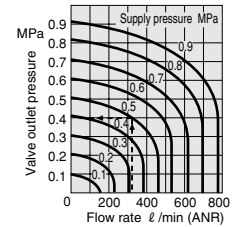
Parts	Materials
Body	Aluminum alloy (anodized)
Valve body	Nylon
Valve seat	Synthetic rubber

Flow Rate

S125



S250



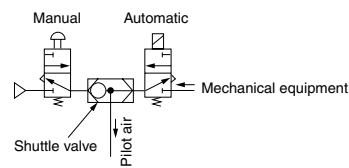
1MPa = 145psi., 1 ℓ/min = 0.0353ft³/min.

How to read the graph

When the supply pressure is 0.5MPa [73psi.] and the flow rate is 300 ℓ/min [10.6ft³/min.] (ANR), the valve outlet pressure becomes 0.4MPa [58psi.].

Application Examples

Switching between automatic and manual



Switching of pilot air from multiple positions

