

KOGANEI

Auxiliary

HOLDERS AND COLUMN TUBE

INSTRUCTION MANUAL Ver.1.0

HOLDERS AND COLUMN TUBES

alpha series

Holders and Column Tubes are:

- Highly reliable fixtures in firm support of actuator operations.
- High quality support equipment with flexible adaptability to all design and assembly requirements in mechanical devices.
- Column Tubes come in three types and nine variations capable of heavy-load operations.



Order Codes

● Column tube

PHP



Outer diameter of the tube × overall length

Column tube

■ Outer diameter of the tube and overall length

	mm
Outer diameter of the tube	Overall length
40 [1.575in.]	300, 450, 600
54 [2.126in.]	450, 600, 750
74 [2.913in.]	600, 750, 900

● Holder



Holder basic model

PHU — Union type

PHB — Base type

Outer diameter of the using tube

40 — ϕ 40 [1.575in.]

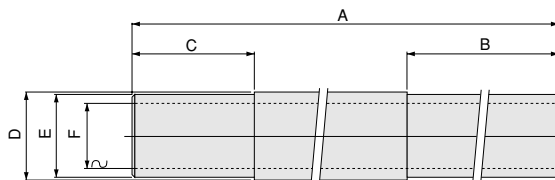
54 — ϕ 54 [2.126in.]

74 — ϕ 74 [2.913in.]

Dimensions (mm)

Column tube Materials: Mild steel (nickel plated)

● PHP



■ Mass

g [oz.]

Type	Overall length mm	300	450	600	750	900
PHP40	900 [31.7]	1480 [52.2]	2290 [80.8]	—	—	—
PHP54	—	2970 [104.8]	4410 [155.6]	5700 [201.1]	—	—
PHP74	—	—	6300 [222.2]	8090 [285.4]	9900 [349.2]	—

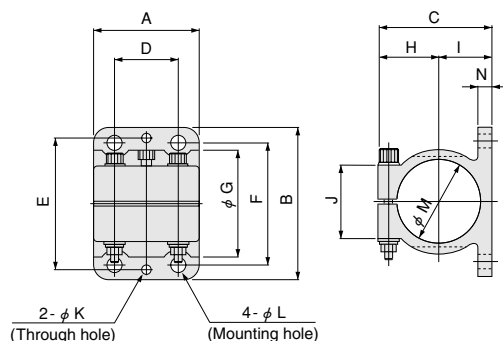
Code	A					B					C	D	E	F
Model	Overall length	300	450	600	750	900	300	450	600	750				
PHP40	300	450	600	—	—	Fully machined ^{*1}	Fully machined ^{*1}	300	—	—	70	φ 42.7	φ 40h8 ^{0.039}	φ 32.7
PHP54	—	450	600	750	—	—	Fully machined ^{*2}	300	300	—	80	φ 57	φ 54h8 ^{0.046}	φ 43
PHP74	—	—	600	750	900	—	—	300	300	300	120	φ 76.3	φ 74h8 ^{0.046}	φ 62.3

※1: Fully machined at ϕ 40h8^{0.039}.

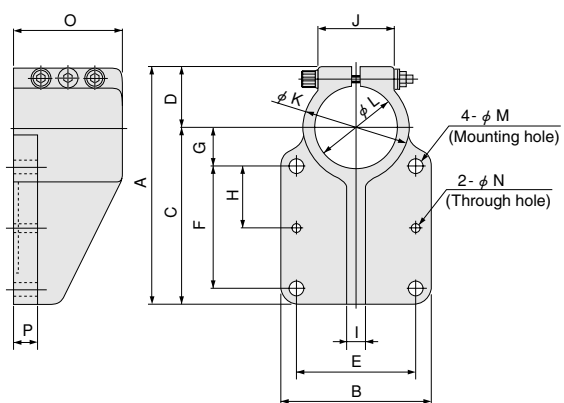
※2: Fully machined at ϕ 54h8^{0.046}.

Holder Materials: aluminum alloy casting (black painted)

● PHU (Union type)



● PHB (Base type)



■ Mass

g [oz.]

Model	Mass
PHU40	320 [11.3]
PHU54	510 [18.0]
PHU74	1170 [41.3]

■ Mass

g [oz.]

Model	Mass
PHB40	440 [15.5]
PHB54	850 [30.0]
PHB74	2280 [80.4]

Code	A	B	C	D	E	F	G	H	I	J	K	L	M	N
Model														
PHU40	60	80	62	40	68	60	54	32	30	40	4	7	40H8 ^{+0.046} ₀	8
PHU54	70	100	75	40	86	80	70	40	35	50	5	9	54H8 ^{+0.046} ₀	10
PHU74	90	140	100	60	120	110	94	53	47	70	6	11	74H8 ^{+0.015} ₀	12

Code	A	B	C	D	E	F	G	H	I	J	K	L	M	N	O	P
Model																
PHB40	112	80	80	32	60	50	20	25	10	40	54	40H8 ^{+0.039} ₀	7	4	60	12
PHB54	155	100	115	40	80	80	25	40	12	50	70	54H8 ^{+0.046} ₀	9	5	70	15
PHB74	203	140	150	53	110	105	30	55	20	70	94	74H8 ^{+0.046} ₀	11	6	110	20

HOLDERS AND COLUMN TUBES

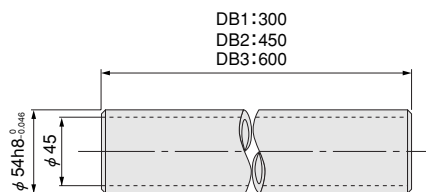
Strength and Simplicity

As fixtures required in production line operations, Koganei Holders and Column Tubes are high quality support equipment offering flexible adaptability to all design and assembly requirements in mechanical devices.



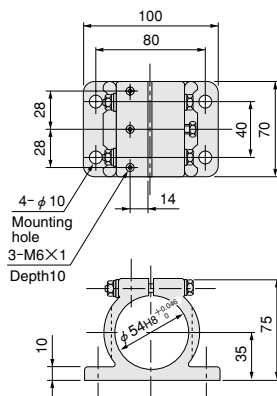
DB1, DB2, DB3 Column tubes

- Materials : Mild steel (zinc plated)
- Mass: 1.6kg [3.5lb.] (DB1), 2.5kg [5.5lb.] (DB2), 3.3kg [7.3lb.] (DB3)



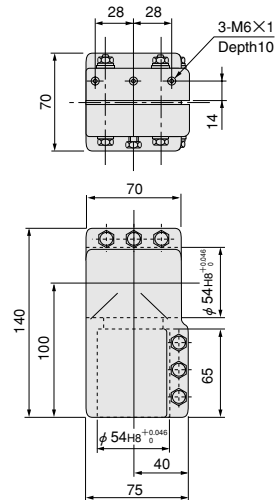
DH1 Holder

- Material: aluminum alloy casting (black painted)
- Mass: 0.5kg [1.1lb.]



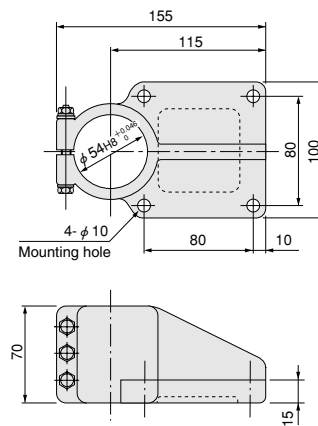
DH2 Holder

- Material: aluminum alloy casting (black painted)
- Mass: 0.8kg [1.8lb.]



DH3 Holder

- Material: aluminum alloy casting (black painted)
- Mass: 0.8kg [1.8lb.]



DH4 Holder

- Material: aluminum alloy casting (black painted)
- Mass: 0.6kg [1.3lb.]

